

Texas A&M AgriLife Extension Service
The Texas A&M University System

NAME: Brandon Albus TITLE: CEA-ANR
COUNTY: Lamb MONTH: October YEAR: 2024

EXTENSION ACTIVITY REPORT TO COUNTY COMMISSIONERS COURT

Miles traveled: 3959

Selected major activities since last report (October 2024)

Weekly-Lamb County 4-H Update sent out each Friday

10/1 Summaries Due

10/1 County Show Bored Metting (8 People)

10/1 Olton 4-H Club Meeting (17 kids)

10/2 Working of office work and getting ready for performance appraisal

10/5 Leave for Waco and Dallas Judging (4 Kids)

10/6 Pistol Practice (16 Kids)

10/6 Waco Judging Contest (3 Kids)

Results

TY Carr: 182 overall, 12 Cattle, 187 Sheep and Goats, 354 Hogs and 120 questions

Piper Carr: 248 Overall, 135 Cattle, 348 Sheep and Goats, 113 Hogs and 189 Questions

Kealee Bussey: 336 Overall, 379 Cattle, 194 Sheep and Goats, 264 Swine and 319 Questions

Team: 74 overall, 70 Cattle, 74 Sheep and Goats, 84 Swine and 67 in questions

10/6 State Fair of Texas Prospect steer show (1 Kids)

Results

Kauy Carr: 1st place red Carss Steer and Reserve Breed Champion Red Cross

10/7 State Fair of Texas Judging (4 Kids)

Results

Kauy Carr: 237 Overall, 67 Cattle, 95 Sheep and Goats, 510 Hogs and 287 Questions

Ty Carr: 529 overall, 612 Cattle, 479 Sheep and Goats, 347 Hogs and 611 Questions

Piper Carr: 464 Overall, 134 Cattle, 590 Sheep and Goats, 481 Hogs and 400 Questions

Kealee Bussey: 293 Overall, 112 Cattle, 327 Sheep and Goats, 440 Hogs and 301 Questions

Team: 89 overall, 19 Cattle, 87 Sheep and Goats, 129 Hogs and 93 questions

10/7 Littlefield 4-H Meeting (16 Kids)

10/09 Commissioners court

10/9 Office Meeting(Moved to the 10)

10/9 TCAAA Planning Meeting

10/9 Area Show Bored Meeting (13 People)

10/10 Office Meeting

10/10 Online Vet skill a thon (4 Kids)

Results

Denton Moore: 17th overall

Resse Moore: 80th Overall
Valaree Harper: 2nd overall
Paisli Calunch: 19th Overall

10/11 Commissioners court (Changed to the 9th)
10/11 Meeting to get ready for Grilling Games
10/12 Grilling Games (4 Kids)

Results

Inter

Paisli Claunch: 15th Veg, 10th pork 70th over all
Grant Muller: 5th Veg, 65th overall

Senior

Ryan Muller:
Hunter Dwyer:

10/14 OFFICE Closed

10/17 Appraisal Meeting

10/18 OFF FOR MEETING

10/19 Pumkin Trail CANCELED DUE TO WEATHER

10/21 Crop Report

10/21 Validation Meeting and helping Bean Validate goats (2 Kids)

10/21 Gold Star Banquet (2 Kids From the county and 5 adults)

10/22 Meeting with Alan Bean

10/22 AG day planning

10/22 Meeting with Farm Buro

10/22 Went and talked to the local vets

10/22 Goat Validation (3 Kids)

10/22 Adult Leaders Meeting (4 Adults)

10/23 Race Trial Field Day at Jeffs (27 People)

10/23 Heifer Validation (1 Kids)

10/24 Training in Plainview

10/24 Validation at the Ag Center (30 Kids)

10/25 Taking Hogs to get cut at Vet (3 kids)

10/26 806 Show (8 Kids)

10/27 806 Show (8 Kids)

Show Results

Sloan Beerwinkle: 1st place Herford Heifer, 1st place Herford Heifer, 1st place Herford Steer and 2nd place Red Cross

Sage Beerwinkle: 1st place Herford Heifer, Reserve Breed Champion Herford Heifer, 2nd place Herford Steer and 2nd place Herford Steer

Beckett Deberry: 1st place Red Angus Heifer, Breed Champion Red Angus Heifer and Grand Champion Heifer

Callee Albus: 2nd place Herford Heifer, 1st place ABC and Breed Champion ABC

Brooklyn DeBerry: 2nd place Main Heifer

Kimber Albus: 1st place Main Heifer

Paisli Calunch: 2nd place Gert Steer, 2nd place Char Steer and 2nd place Black
Kaury Carr: 1st place Main, Breed Champion Main, 1st place Red Cross and Breed Champion Red Cross
10/31 AG Day (136 Kids, 15 teachers, 18 volunteers, 4 agents and 1 county staff)
10/31 Haunted House (300 contacts)

Monthly Contacts

Telephone	Message (total conversations)	Office Visits	Site Visits	Group	Total Direct contacts	Media Posts	Newsletter
200	48	20	10	6	679	3	0

Major plans for next month: (November 2024)

Weekly – Lamb County 4-H Update sent each Friday

11/01 Office Work Day

11/03 Pistol Practice

11/03 Starting BB gun classes

11/04 District Office For Dannys Training

11/04 District Office for Carrier ladder training

11/04 Crop Report

11/05 District Food Show

11/05 Sudan Stock Show sign up

11/06 Set up for District Pistol

11/07 District Pistol

11/08 Commissioners Court

11/08 Office work day

11/09 Get food for Sudan fundraiser

11/10 BB Gun Training

11/10 Sudan Fundraising meal

11/11 Tag Pigs

11/11 OFFICE CLOSED

11/11 Littlefield 4-H Meeting

11/12 Olton 4-H Club Meeting

11/13 Teams Meeting

11/14 Office Meeting

11/15 FORT WORTH MUST BE IN THE MAIL

11/15 Take pigs to get cut @ 9

11/17 Go to Levelland to help with OCC

11/17 BB gun training



11/18 Food Show FCH Quiz Bowl
11/19 Hog Validation In Olton
11/20 Teams Meeting
11/22 Micheals Retirements Party
11/22 Commissioners Court
11/24 BB gun Training
11/27 County Thanksgiving
11/28 Thanksgiving

Extension Mileage and Travel Report to County Commissioners Court

Date	Monthly Travel	Miles	Meals	Lodging
	Daily Travel (30)			
GRAND TOTAL OF MILES, MEALS & LODGING		3959		

Other expenses:

I hereby certify this is a true and correct report of travel (mileage) and other expenses incurred by me in performance of my official duties for the month shown.

Date: 11/01/2024 Signed: Brandon Albus

Educational programs of the Texas AgriLife Extension Service are open to all people without regard to race, color, sex, disability, religion, age, or national origin.
The Texas A&M University System, U.S. Department of Agriculture, and the County Commissioners Courts of Texas Cooperating



October

Castro County

- Agronomic Calls/Field Visits (7)
- Horticulture Calls/Home Visits (1)
- Submitted weekly crop condition updates to USDA-NASS
- Harvested Castro Irrigated RACE (Replicated Agronomic Cotton Evaluation) trial
 - 8 varieties replicated 3 times
 - Blake Fennel - producer

Hale County

- Agronomic Calls/Field Visits (4)
- Horticulture Calls/Home Visits (3)
- Submitted weekly crop condition updates to USDA-NASS
- Field Tour at Hale Irrigated RACE (Replicated Agronomic Cotton Evaluation) trial
 - 8 varieties replicated 3 times
 - Alan Monroe - producer
 - 15 people attended
- Harvested Hale RACE Trial
- PCG live broadcast from Hale RACE trial
- Took data on forage variety trial
 - 20 varieties replicated 3 times
 - Robbie Harkey - producer
- Presented at Ag Youth Fair to 307 4th-grade students on soil health and soil microbes
- Attended Helena Field Day in Cotton Center
- Attended Cotton Center Gin Luncheon
- Planted irrigated wheat variety trial
 - 40 varieties
 - Tom Gregory - producer
- Attended Plainview Lions Club Meeting

Lamb Country

- Agronomic Calls/Field Visits (4)
- Horticulture Calls/Home Visits (4)
- Field Tour at Lamb Irrigated RACE (Replicated Agronomic Cotton Evaluation) trial
 - 8 varieties replicated 3 times
 - Jeff Edwards - producer
 - 28 people attended
- Harvested Lamb RACE trial
- Attended office planning for Ag Awareness Day
- Assisted resident in taking a water sample to send off for analysis
- Planted Lamb Irrigated Wheat Variety Trial
 - 40 varieties replicated 3 times
 - Dustin McFaddin - producer
- Lamb County 4th Grade Ag Awareness Day (136 students)

Other

- Manage program Facebook page with 417 followers
- Manage program Instagram page with 79 followers
- Manage program X page with 69 followers
- Traveled 1,321 miles
- Attend bi-monthly PCG meeting
- Collaborate with local producers via group text weekly to get field/crop updates, issues, and praises
- Complete Serving All Texans Face-to-Face Professional Development
- Complete Creating Meaningful Content Professional Development

Upcoming Events

- November 13 - Leadership Plainview @ Plainview Ext.
- November 20 - Hay Quality/Cow Needs Webinar
- November 22 - PCG @ Lubbock
- December 3-5 - Amarillo Farm Show
- December 5 - Olton Ag Conference @ Olton
- December 6 - PCG @ Lubbock

- December 18 - CEU Meeting @ All County Offices
- December 19 - Lamb County Crops Conference @ Littlefield
- January 9 - Castro County Crops Conference
- January 22 - Mid Plains Ag Expo @ Plainview
- February 24 - Profitability Workshop @ Olton
- February 25 - Profitability Workshop @ Plainview
- March 4 - Annie's Project @ Plainview

FAMILY & COMMUNITY HEALTH

October 2024

Program/Event Preparation

- FSHY Program, Performance Appraisal, Ag Day Preparations throughout the month
- 10/9: TTU Planning Meeting TEAMS
- 10/11: Olton RRW Planning Meeting; Rubric Revision w/ Shawnte
- 10/15: District FC Recipe Planning
- 10/16: Quiz Bowl Workday @ District Office
- 10/25: District FC Team Sorting

Outreach/Networking/Contests

- 10/4: SE 4-H Raffle @ Football game

Planned Educational Activities

- 10/2: FSHY – LHS (30Y, 1A)
- 10/7: Lfd 4-H Meeting (13Y, 7A), Innovative Ideas TEAMS Mtg.
- 10/8: TEAFCS (TEAMS); Littlefield Primary Head Start Meeting (10A, 2AV); Olton 4-H Highway Cleanup
- 10/9: 10/2: FSHY – LHS (30Y, 1A)
- 10/10: CTE Career Fair (1Y)
- 10/13: Int, Sr FC Practices (9Y, 1YV, 1A, 1AV)
- 10/14: Jr FC Practice (5Y, 1YV, 3A); SUMMIT Adult Advisory Committee Meeting (13A, 1Y)
- 10/15: LHS Fentanyl Presentation (380Y, 40A); SE 4-H Meeting (10Y, 3A)
- 10/20: FC, FCH Quiz Bowl Practices (17Y, 6A, 1AV)
- 10/21: Tour SPC (1Y); Jr FC Practice (4Y, 1YV, 4A); Gold Star Banquet (2Y, 4A, 1AV)
- 10/22: FSHY (30Y, 1A); Adult Leaders Meeting (4A)
- 10/23: TTU FCSE Class (22A)
- 10/24: Olton Red Ribbon Week (45Y, 5YV, 1A)
- 10/27: FC, FCH Quiz Bowl Practices (17Y, 5A, 1AV)
- 10/28: Jr FC, CDM Practices (7Y, 1YV, 3A, 1AV)
- 10/30: FSHY (30Y, 1A); CDM Practice (2Y, 1A)
- 10/31: Ag Awareness Day (136Y, 6YV, 10A, 12 AV)

Professional Development

- 10/10: Office Conference
- 10/17: Annual Performance Appraisal w/ DEA
- 10/22: Office Conference – Ag Day

Upcoming Plans

- 11/1: LISD Watch UR BAC
- 11/2: County Food Challenge Contest
- 11/4: Food Challenge Workday
- 11/5: District Food Challenge
- 11/7: Virtual 4-H Summit
- 11/9: WTAMU Game Day Experience (Senior 4-Hers)
- 11/10: Lfd 4-H Club Flag Set-up
- 11/11: Holiday; Lfd 4-H Club Meeting; SUMMIT Board Meeting
- 11/12: Cooking Well With Diabetes @ LHS; Olton 4-H Meeting
- 11/13: Source to Solution Conference Exhibit; Quiz Bowl Workday
- 11/14: SE 4-H Meeting; Office Conference
- 11/15: Meeting with Judge
- 11/18: District Food Show, Quiz Bowl, CDM
- 11/19: Rubric Rewrite w/ Shawnte; Review of Professional Development Meeting
- 11/20: Christmas Cluster – Parmer Co; LISD SHAC Committee
- 11/21: CWWD – LHS
- 11/22: Christmas Cluster – Castro Co; DEA Retirement Party
- 11/25: Christmas Cluster – Lamb Co.
- 11/28-29 - Holiday

Monthly Contacts

Phone	264
Conversations	739
Office Visits	72
Site Visits	12
Group	25
Total Direct Contacts	914
Media Posts	7
Newsletters	In Progress

See Attached for Detailed Mileage & Travel Report

Total March Miles: 2,365

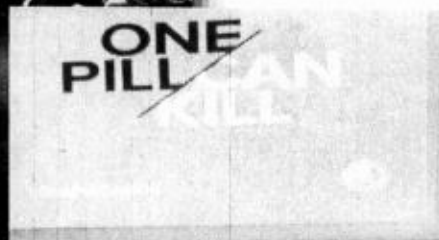
End of Month Vehicle Mileage: 130,380

Fresh Start to a Healthier You Littlefield High School – 4 Week Series



Thirty LHS Nutrition students became BLT Graduates when completing the Fresh Start to a Healthier You series. They learned about MyPlate, healthy ways to eat fruits and vegetables, about proper measuring, making healthier food choices, and smart budgeting when it comes to food shopping. We are following up with Cooking Well with Diabetes.

Littlefield High School Fentanyl Presentation



380 Littlefield High School students heard a message from the Drug Enforcement Agency about the dangers of Fentanyl during Fentanyl Awareness Month. All Texas schools are required to provide education to their students about the dangerous drug.



TTU FCSE Presentation (Mini Food Challenge)



We have built a relationship with Texas Tech University, College of Health & Human Sciences, Department of Family & Consumer Sciences to help educate their upperclassmen students about Texas AgriLife Extension. This year we focused on youth programming and led them through an abbreviated Food Challenge contest.

Olton Red Ribbon Week Activities



Forty-five sixth graders at Olton Junior High participated in hands-on activities during Red Ribbon Week. They learned about how the liver detoxifies, how the brain is affected by drugs/alcohol, experienced difficulty breathing to simulate smoking/vaping, "assigned judgement" to areas contributing to youth making harmful choices, experienced "peer pressure," and saw how safe medications can turn into dangerous drugs if taken incorrectly or when they don't know what's in them.



Ag Awareness Day



RELEVANCE

- In 2002 in Texas, there were a total of **146,799 rural crashes** including **1,995 fatal** crashes with **2,304 fatalities**.
- As of April 1, 2023, Lamb County had **5 crashes** resulting in **7 fatalities** and **148 crashes** resulting in **106 injuries** of varying levels. There were **9 DUI** crashes with **1 fatality** and **5 injuries** of varying severity
- TxDOT reported that **52 rural** drivers under the age of 21 were involved in DUI crashes compared to **34 urban** drivers in 2022.
- **16** people were arrested on drug charges and child sex crimes charges in January 2023 including one juvenile.
- Since 2014, **e-cigarettes** have been the most commonly used tobacco product among youth and young adults

The 88th Texas Legislature passed three relevant laws:

- **HB 3144 established the month of October as Fentanyl Poisoning Awareness Month** to increase awareness of the dangers of fentanyl and potential overdoses.
- **HB 3908** required each school district and open-enrollment charter school to **annually provide** to students in **grades 6–12 research-based instruction on fentanyl abuse prevention and drug poisoning awareness**.
- **HB 114** emphasizes a **zero-tolerance stance on vaping within schools** and extends the regulations to encompass all tobacco and nicotine products, including e-cigarettes.

RESPONSE

Youth SUMMIT - Students United to Make Meaningful Influences Together - started in 2001 when a group of youth realized issues in their community regarding drugs, alcohol, and violence also affected other communities. They created a coalition with youth from other communities to work together to combat the issues. The program continues now focusing on the original areas in addition to mental health, driving safety, and general health.

Lamb County FCH Committee and **Lamb County LEAF Coalition**, and various **Lamb County Schools** identified the need for assistance in addressing:

- prevention programs for youth regarding destructive habits and behaviors.
- something for youth to do as an alternative to unhealthy or destructive options.

As a result, the committees worked together to host the **Lamb County LEAF** camp to provide alternatives for youth to participate in during the summer instead of destructive activities. **County Youth** opted to join the **SUMMIT Student Planning Committee** to plan and organize an area-wide conference for their peers. **Three county schools** hosted opportunities for education for their students addressing topics identified by agent and administrators

Target Audience

The target audience for the Youth Health & Safety Plan was **3rd-12th grade** students, with an *emphasis* on high school students.

Partnerships & Collaborators

- Lamb County Hooked on Hope/LEAF Drug-Free Communities Coalition
- Littlefield, Olton, & Springlake-Earth ISDs
- Watch UR BAC

VALUE STATEMENT

Safety Education

Youth who participate in the Texas A&M AgriLife Extension Service safety education programs learn to avoid risks associated with rural and farm life. More than half of the deaths of young Americans between the ages of 15 and 24 are due to accidents. Reducing accidents saves lives and also reduces long-term health care and insurance costs for taxpayers.

72%

of youth in Texas have tried alcohol by 12th grade (Texans for Safe & Drug-Free Youth).

1 IN 5

Texas high school students report taking prescription drugs not prescribed by a doctor (Texans for Safe & Drug-Free Youth).

E-CIGARETTES

have become the most commonly used tobacco product among youth in the U.S. since 2014 (Texas DSHS 2023 E-Cigarette Report).



RESPONSE

Program	Location	Ages	No. Reached
Red Ribbon Week - DEA Fentanyl Presentation	Olton Junior High; Olton High School	5th-12th grades	440
Red Ribbon Week - Elementary Stations	HP Webb Elementary - Olton	2nd-4th grades	76
Watch UR Bac - Vaping/Fentanyl Presentation	Springake-Earth High School	8th-2th grades	135
Watch UR Bac - Vaping/Fentanyl Presentation	Littlefield High School	9th-12th grades	395
Youth SUMMIT	Lubbock	9th-12th grades	343
Lamb Co. LEAF Camp	Littlefield	4yo-12th grades	59

IMPACT

EVALUATION:

A post-survey was conducted following the Youth SUMMIT event with an over 4.41 satisfaction score out of 5. Additionally, schools have asked for continued education and training for students and staff.



1,148 youth educated

• Ages ranged from 4 - 18

**3 local schools, 6 county communities,
20 South Plains school districts**

reached through educational efforts

6 major events
organized to provide education.



FUTURE PROGRAMMING

During the 2024-2025 year, programming related to community health and safety will be provided through:

- participation in the Youth SUMMIT Student Planning Committee.
- youth presentations at the annual SUMMIT conference.
- demonstrations and speakers at county schools.
- participation in the Olton ISD Shattered Dreams programs.
- social media posts and newspaper articles.
- training with staff members at Lamb County schools over youth drug trends.
- Red Ribbon Week activities

"I learned that even if you think you can get away with drinking or smoking, everything will come with a consequence. It's better if you keep yourself and everybody else safe."
Junior, Youth SUMMIT Participant



For more information:

Kathy Lostroh

Lamb County Extension
Agent - Family & Community
Health

806.485.9135

kathy.lostroh@ag.tamu.edu



RELEVANCE

- **1,746** recipients in Lamb County receive benefits from the Supplemental Nutrition Assistance (SNAP) program.
- The percentage of children living in poverty in *Lamb County* is **26%** compared to the state of *Texas* at **20%**.

Research suggests that SNAP recipients and other limited resource audiences consume diets that are **not in agreement with current dietary recommendations**, potentially **increasing their risk for the development of chronic disease**.

Food insecurity, obesity, and lack of access to healthy foods are other issues that impact this audience and have strong potential to **negatively impact health**.

A child's potential to thrive is limited if they face hunger. Not having adequate nutrition impacts how children **grow, play, and learn**. Texas has one of the highest rates of child food insecurity in the nation, at nearly 22 percent.



Texas has the **7th** highest obesity rate for youth ages 10-17.



Over **600,000** Texas youth ages 10-17 are obese.

RESPONSE

Based on input from committee members and after visiting with the director of the **Little Steps Head Start** in Littlefield, the 3-4 year old preschool class was selected as the target audience to implement the **Color Me Healthy** program. The curriculum supports what the children are learning daily and supplementing it by providing fun, innovative, and interactive learning opportunities on **physical activity** and **healthy eating**. It also incorporates a **parent engagement** component which is available in Spanish.

To work with the daily schedule, the nine-session curriculum was completed in five days over a two-week period. An **interactive lesson was introduced each morning** and a **food tasting was held each afternoon** during snack-time. **Fifteen** participants completed the curriculum and were deemed "graduates."

Two parent meetings at Little Steps Head Start and **1 parent meeting** at Sudan Head Start were held focusing on nutrition for preschool-aged children including portion sizes, how children can help in the kitchen, and food budgeting. Additionally, **140 fourth graders** and **9 teachers** from four county schools made fruit smoothies and learned about nutrients at the 2023 Ag Awareness Day.

Better Living for Texans

Youth

YBLT programs provide community nutrition education to limited resource adults, youth, and children. Curricula series for youth and children encourage participants to make healthier food choices and increase physical activity. The benefit of making healthier food choices and adopting a physically active lifestyle play a role in the prevention of many chronic diseases.

1.6 Million

Texas children receive SNAP benefits (Center on Budget & Policy Priorities).

808

Lamb County youth received SNAP benefits in August 2023 (hhs.texas.gov).

\$129,000

The amount more in medical costs a child with obesity requires compared to a child with normal weight (Michael & Susan Dell Center for Healthy Living).



RESPONSE

The following is an outline of the lessons, activities, foods tasted, and newsletter information for the *Color Me Healthy* curriculum.

Sessions & Focus	Interactive Activities	Foods Tasted	Parent Newsletter Focus
1: Introduction, Colors 2: Identifying colors of fruits & vegetables	<ul style="list-style-type: none"> <i>Color Me Healthy</i> song with motions <i>Taste the Colors</i> song <i>Eating Through the Alphabet</i> book 	Fresh Fruit Rainbow Sticks (fruits of varying colors)	MyPlate; MyPlate Pizza Recipe; Spinach Lentil Soup; Family Mealtime; Black Bean & Corn Salad; Ways to vary fruits & vegetables
3: Trying New Foods 4: How Foods Grow	<ul style="list-style-type: none"> <i>Try New Foods</i> song <i>I Will Never Not Eat a Tomato</i> book Brown Paper Bag Mystery <i>I Am an Apple</i> book 	Fruit smoothies; Various vegetables	Tips for picky eaters; Roasted vegetables recipe; Apple cinnamon oatmeal; Healthier kitchens & cupboards
5: The Heart 6: Physical Activity	<ul style="list-style-type: none"> <i>Heartbeat</i> song Climb Every Mountain imaginary trip What's Going On at the Park imaginary trip <i>Hear Your Heart</i> book 	Flavored-infused waters; Broccoli & cauliflower with various dip options (yogurt, hummus, mild salsa, etc.)	Ways to get physically active as a family; White bean dip with garlic & rosemary
7: Milk/Dairy Products 8: Where Foods Grow	<ul style="list-style-type: none"> A Visit to Mr. & Mrs. Smith's Farm imaginary trip <i>From Milk to Cheese</i> book 	Yogurt parfait; Variety of apples	Yogurt parfait; Dairy-provided nutrients; Cheesy spinach noodles; Cinnamon apples; Seasons for produce
9: Healthy Snacks, Evaluation	<ul style="list-style-type: none"> <i>Color Me Healthy</i> song <i>The Picnic</i> song A Day at the Beach imaginary trip <i>The Very Hungry Caterpillar</i> book 	Trail Mix	Snack ideas; Whole grain trail mix; Choosing whole grains; Frozen vegetable stir-fry

IMPACT

EVALUATION:

According to teacher and parent feedback,

- 100% of participants were observed to be more **willing to taste fruits**.
- respondents indicated the program **improved their child's willingness to taste vegetables**.
- 100% of parents responding agree that the program has **increased their child's physical activity**.

100%



GRADUATE DEMOGRAPHICS:

- 69% male
- 23% Black/Afr. American
- 31% Female
- 69% Hispanic
- 8% Caucasian

TOTAL EDUCATED:

15-Preschool youth 140-4th graders 13-Adults





For more information:
Kathy Lostroh
 Lamb County Extension
 Agent - Family & Community
 Health
 806.485.9135
kathy.lostroh@ag.tamu.edu

FUTURE PROGRAMMING

Based on the results from 2023-2024, Little Steps Head Start (Littlefield) has chosen to continue the *Color Me Healthy* curriculum annually with their clientele. Additionally, Sudan Head Start has asked to implement the curriculum during the 2024-2025 year. Both programs, as well as Littlefield ISD Head Start, have asked to AgriLife Extension to present nutrition information at their parent meetings.



Extension programs of Texas AgriLife Extension Service are open to all people without regard to race, color, sex, religion, national origin, age, disability, genetic information, veteran status, sexual orientation, gender identity or any other classification protected by federal, state or local law. The Texas A&M University System, U.S. Department of Agriculture, and the County Commissioners Courts of Texas Cooperating.

AGRILIFEEXTENSION.TAMU.EDU

RELEVANCE

- **1,746** recipients in Lamb County receive benefits from the Supplemental Nutrition Assistance (SNAP) program.
- The incidence of **adult obesity** in *Lamb County* is **41%** compared to the state of *Texas* at **36%**.
- Adults that are **physically inactive** in *Lamb County* is **34%** compare to **25%** for *Texas*.

Research suggests that SNAP recipients and other limited resource audiences consume diets that are **not in agreement with current dietary recommendations**, potentially **increasing their risk for the development of chronic disease**.

Food insecurity, obesity, and lack of access to healthy foods are other issues that impact this audience and have strong potential to **negatively impact health**.



34% of Lamb County residents are physically inactive.



26% of Lamb County residents report being in poor or fair health.

RESPONSE

Based on input from committee members and after visiting with the organizer of the **Feed My Sheep Food Distribution at Earth Methodist Church**, the recipients were selected at the target audience to implement the **Fresh Start to a Healthier You** program. The four-session curriculum promotes **increasing fruit and vegetable intake, food safety, and food resource management**. All resources are available in Spanish allowing non-English-speaking participants to receive the education. Committee member Rosalia Marez offered to translate as needed.

To meet the needs of the audience, the four-session curriculum was completed **once a month** immediately following the food distribution. Reminders were given in each food package with additional agent-created resources including **healthy recipes** and ways to use the food items handed out that month. **Five** participants completed the curriculum and were deemed "graduates."

Similar resources were provided to food recipients at **Littlefield Methodist Church**.

Value Statement

Better Living for Texans

The Texas A&M AgriLife Extension Service Better Living for Texans programs provides community nutrition education to limited resource adults, youth and children. Curricula series offered cover the lifespan and encourage participants to make healthier food choices, plan healthy meals, prepare food safely, increase physical activity, and grow their own vegetables. The benefit of making healthier food choices and adopting a physically active lifestyle play a role in the prevention of many chronic diseases.

938

Lamb County adults received SNAP benefits in August 2023
(hhs.texas.gov).

\$1,998

per adult experiencing food insecurity spent in excess total healthcare (UT Health School of Public Health).



RESPONSE

The following is an outline of the lessons, activities, recipes, and educational reinforcement items for the *Fresh Start to a Healthier You* curriculum. Additionally, pocket guides were given with each lesson.

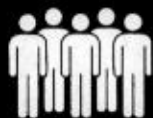
Session & Focus	Subject Matter/Demos/Talking Points	Recipes	Educational Reinforcements
1. Creating Safe & Healthier Meals <i>Focus: Food Safety</i>	<ul style="list-style-type: none"> Four steps to Fight BAC! (Cook, Clean, Chill, Separate) Vegetable Washing Handwashing (use Glo Germ) Make sanitizing solution 	<ul style="list-style-type: none"> Spanish Omelet Breakfast Parfait Fabulous Fruit Muffins 	Veggie Brush/Peeler Spray Bottle
2. Balancing Your Day <i>Focus: MyPlate & Meal Planning</i>	<ul style="list-style-type: none"> Benefits of healthy eating, fruits & vegetables Importance of physical activity Measuring basics Menu Planning Reading/choosing recipes 	<ul style="list-style-type: none"> Elbow Pasta Salad Cowboy Salad Slow Cooker Mexican Pozole Soup 	Measuring Cups/Measuring Spoons Pedometer Lunch Kit
3. Saving More at the Grocery Store <i>Focus: Food Resource Management</i>	<ul style="list-style-type: none"> Slow cooker tips Basic stove top cooking skills Price comparisons with unit pricing Use of sales ads, shopping list 	<ul style="list-style-type: none"> Healthier Beef Goulash Pulled Pork Sandwich with Red Cabbage & Carrot Slaw (slow cooker) Skillet Pasta Dinner 	Thermal Grocery Bag Magnetic Grocery List
4. Celebrating Small Bites <i>Focus: Snacks/Celebrations with Vegetables</i>	<ul style="list-style-type: none"> Preparing family-friendly vegetables Healthier celebrations 	<ul style="list-style-type: none"> Tangy Fruit Salad Strawberry S'mores Oven-Baked Sweet Potatoes 	A Fresh Start to a Healthier You! Creating Safe & Healthy meals on a Budget Magazine

IMPACT

EVALUATION:

According to pre- and post-survey results:

- there was a **200%** increase in participants using **MyPlate** when making food choices.
- there was a **200%** increase in the average number of days participants engaged in **vigorous physical activities**.
- the average number of days participants **exercised for at least 30 minutes** increased by **77%**.



GRADUATE DEMOGRAPHICS:

- 40% male
- 40% Hispanic
- 60% Female
- 60% Caucasian





For more information:
Kathy Lostroh
 Lamb County Extension
 Agent - Family & Community
 Health
 806.485.9135
kathy.lostroh@ag.tamu.edu

FUTURE PROGRAMMING

Based on the results from 2023-2024, participants at Earth Methodist Church have asked for additional education, specifically something focusing on physical activity for those with limited mobility. New partnerships are being sought with First Baptist Church - Littlefield, Littlefield Senior Citizens Center, and Sudan Senior Citizens Center.



Extension programs of Texas AgriLife Extension Service are open to all people without regard to race, color, sex, religion, national origin, age, disability, genetic information, veteran status, sexual orientation, gender identity or any other classification protected by federal, state or local law. The Texas A&M University System, U.S. Department of Agriculture, and the County Commissioners Courts of Texas Cooperating.

AGRILIFEEXTENSION.TAMU.EDU

RELEVANCE

Foodborne illnesses are a public health burden and contribute a significant amount to the cost of health care each year. Foodborne illnesses are preventable and typically underreported. Many cases go unreported due to people not seeking medical care for mild cases. A small percentage of foodborne illnesses are the result of identified foodborne outbreaks. These illnesses certainly pose a public health risk, but can present certain populations with many challenges.

- **Children under 5 years old** have the highest incidence of lab-confirmed infections from some foodborne pathogens.
- **Pregnant women, adults over 65 years old and those with compromised immune systems** are at higher risk of hospitalizations and death from foodborne illnesses.

The **Texas Health and Safety Code, Texas Food Establishment Rules** states that food establishments handling, preparing, or serving exposed time/temperature control for safety foods, are required to have a **certified food manager** on staff at all times. These rules also state that **all food employees** should complete an accredited food handlers program within 60 days of employment. In many cases, well-trained food handlers are more valuable employees.

Texas A&M AgriLife Extension Service Food Protection Management program was developed to meet the need for quality food safety education in Texas retail food establishments. Our hands-on *Certified Food Managers course* equips employees with the latest in food safety principles and practices, and prepares them for the National Certified Food Manager's Exam. The 2-hour *food handler program* is accredited by the Department of State Health Services, and trains front-line food service workers on the basic principles of food safety. The *Cooking Up A Cottage Food Business* one-shot program discusses the Texas Cottage Food Law and Cottage Food Business basics.

RESPONSE

Family and Community Health Committees and residents across District 2 have identified the need for food safety education programs. An agent team of *Family and Community Health Agents from Lubbock, Hockley, Floyd, Hale and Lamb Counties and Health Agent from Castro, Hale and Lamb counties* joined together to offer Food Managers Courses across District 2. We were able to offer **seven food managers courses** in the year 2024. The agent team hosted **one Cooking Up a Cottage Food Business class** in Lubbock County (as requested by community members). Individual agents were also able to offer **food handlers courses in their home counties** as shown in results section.

Target Audience

- These programs targeted potential Food Managers, Food Service Workers and Cottage Food Business Owners.

Partnerships & Collaborators Certified Food Manager's Course

- Lubbock Restaurant Association
- Texas DSHS Public Sanitation & Retail Food Safety Supervisor
- Burger King & Taco Villa Regional Managers
- South Plains College Biology Dept.

Food Handlers Course -Castro, Hale, Lamb Counties (continued partnerships)

- Littlefield ISD
- Plainview ISD

VALUE STATEMENT

Food Safety Education

Both those who work in food-service establishments and those who simply cook in their own kitchens benefit from Texas A&M AgriLife Extension's food-safety education programs. The resulting improvement in safe food handling benefits consumers by helping prevent food-borne illnesses and the public health care costs they cause.

**1 IN 6
AMERICANS**

get sick from a foodborne diseases each year in the United States

31

known pathogens that can cause foodborne illness

\$15.6 BILLION

estimated cost of foodborne illness each year in the United States



RESPONSE EXAMPLE

Certified Food Managers

Using the Texas A&M AgriLife Extension "Food Safety: It's Our Business" course book, handouts and curriculum, the District 2 agent team was able to offer **seven in-person Food Managers courses**. The food manager course is designed to be delivered using a team-teaching approach and utilizes *handouts, videos, guest speakers (DSHS Sanitarians), PowerPoint presentations and a printed course book*.

The food manager course consists of **two days of intense education and training**. Participants also complete the National Restaurant Association **ServSafe Exam** at the end of the second class day. Once a participant passes the ServSafe exam, their certification is valid for five years.

Food Handlers

Utilizing the Texas A&M AgriLife Extension Food Handlers curriculum, agents are able to offer education and training to food service workers in their counties.

The food handlers curriculum is a **two-hour training course**, designed for in-person delivery, but can be completed online too. The course uses *PowerPoint presentations, handouts and real-life examples* to teach the importance of safe food handling procedures. Upon completion of the Food Handlers course, the participant's certification is valid for two years.

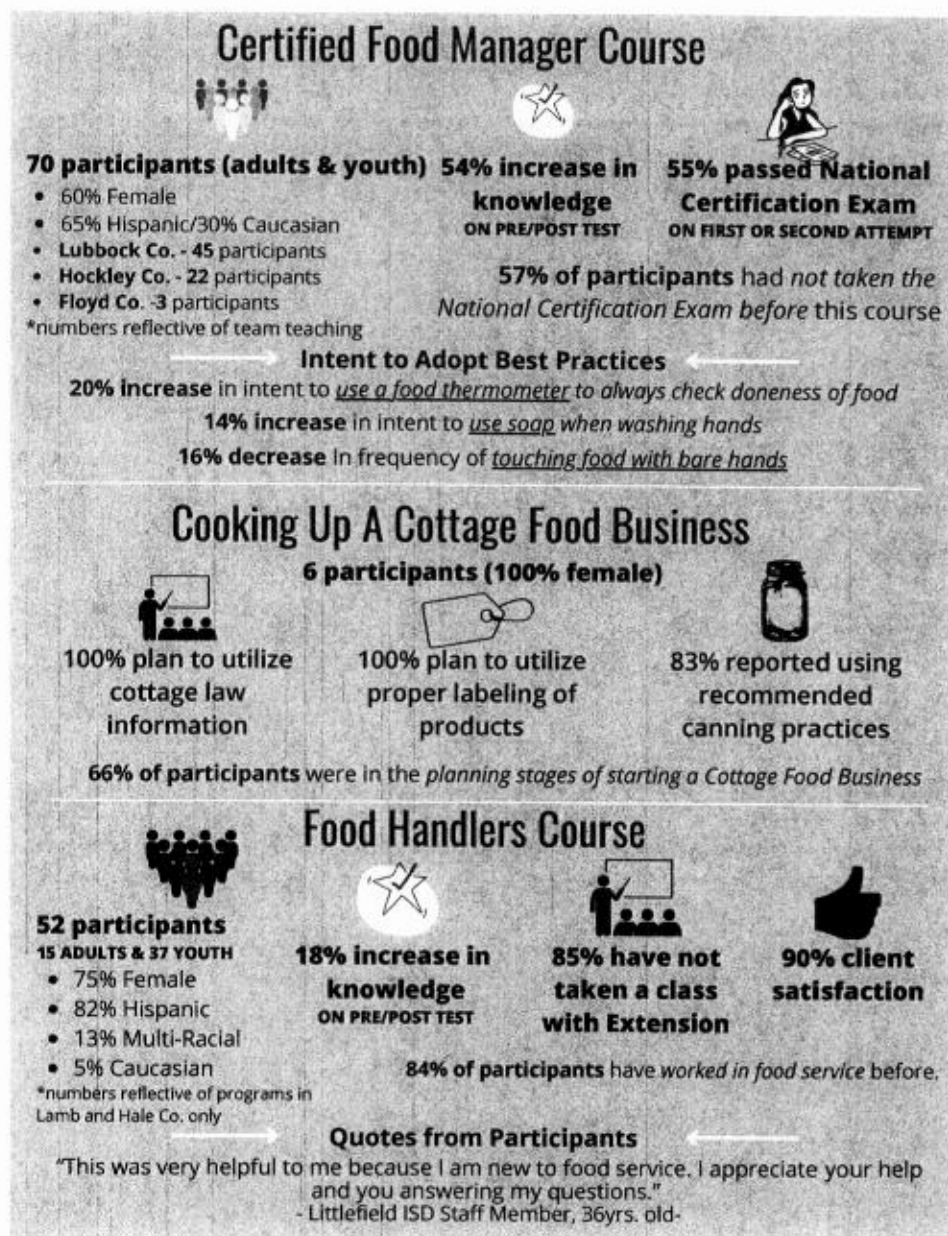
Cooking Up a Cottage Food Business

Utilizing the presentation and handouts developed by Texas A&M AgriLife Extension Food Safety Department the District 2 agent team was able to offer a **3-hour course** in Lubbock County. This course provided education related to **Texas Cottage Food Law** - what can and can not be sold, packaging requirements, recipe requirements and Cottage Food business basics. **Food Handler Certification** was also completed by course participants. The DSHS Sanitarian and City of Lubbock Food Inspector team were guest speakers and available for questions for participants.

EVALUATION STRATEGY

- **Certified Food Managers course** offers a **pre/post test** to evaluate the amount of knowledge gained and intent to adopt best practices. Another evaluation of knowledge gain is the **passing of the ServSafe Exam**.
- **Food Handlers Course** is evaluated using a **pre/post survey** to measure the amount of knowledge gained.
- **Cooking Up a Cottage Food Business** is evaluated using a **post-survey** to measure participant intention to use best practices under Cottage Food Law.

RESULTS



FUTURE PROGRAMMING

Based on the results from 2024, Plainview High School expressed interest in continuing to partner with AgriLife Extension for 2024 Food Handler trainings and Certified Food Manager trainings. We will continue to expand partnerships as our District 2 Agent Team grows to reach new audiences with Certified Food Managers Courses.



For more information:

Kathy Lostroh
Lamb County CEA-FCH

806-485-9135
kathy.lostroh@ag.tamu.edu

Lamb County Vehicle Travel Log					
Date	Destination and Reason	Mileage	Vehicle Used	Fuel	Gallons
10/1	Littlefield, Olton (4-H Meeting)	79	EX Suburban		
10/2	Littlefield	57	EX Suburban		
10/3	Littlefield	56	EX Suburban		
10/4	SEISD (4-H Raffle)	8	EX Suburban		
10/5			EX Suburban		
10/6			EX Suburban		
10/7	Littlefield	59	EX Suburban		
10/8	Plainview, Littlefield	133	EX Suburban		
10/9	Littlefield	62	EX Suburban	Earth	26.580
10/10	Levelland, Lubbock, Littlefield (Career Fair)	174	EX Suburban		
10/11	Olton, Dimmitt (RRW Planning, Rubric Rewrite)	75	EX Suburban		
10/12			EX Suburban		
10/13	Littlefield, Earth (Food Challenge Practices)	57	EX Suburban		
10/14	Lubbock, Littlefield (SUMMIT Meeting)	130	EX Suburban		
10/15	Littlefield	70	EX Suburban		
10/16	Lubbock (Quiz Bowl Workday)	127	EX Suburban	Littlefield	27.300
10/17	Littlefield	66	EX Suburban		
10/18	Littlefield	50	EX Suburban		
10/19			EX Suburban		
10/20	Levelland, Littlefield (supplies, FC & Quiz Bowl Practices)	110	EX Suburban		
10/21	Levelland, Lubbock (SPC, Gold Star Banquet)	247	EX Suburban	Lubbock	28.306
10/22	Littlefield	59	EX Suburban		
10/23	Lubbock (TTU Class)	160	EX Suburban		
10/24	Littlefield, Olton, Lazbuddie (RRW Activities, Fin. Aid Night)	161	EX Suburban		
10/25	Littlefield	55	EX Suburban		

10/26			EX Suburban			
10/27	Littlefield	60	EX Suburban	Littlefield		27.630
10/28	Littlefield	59	EX Suburban			
10/29	Littlefield, Olton (game)	76	EX Suburban			
10/30	Littlefield	57	EX Suburban			
10/31	Littlefield x2	118	EX Suburban			
Total Mileage for the month		2365			0	

Fuel: Where did you fill up with fuel (City).

MONTHLY DISTRIBUTION BY CATEGORY BY GL CODE (DETAIL REPORT)

BRAD BRIDGES, LAMB JP 2 - RAN ON 11/01/2024 AT 11:09am

ALL CASE TYPES

10/01/2024 THRU 10/31/2024
SELECTED BY RECEIPT DATE

FEE	GL#	TOTAL	MONEY	CREDIT	MON/CRD	NON-MONEY	RETAINED	DISBURSED
CRIMINAL DISTRIBUTIONS								
CONSOLIDATED COURT COSTS	010-2213	204.00	142.00	62.00	204.00	0.00	20.40	183.60
JUDICIAL SUPPORT FEE	010-2216	12.00	12.00	0.00	12.00	0.00	1.20	10.80
STATE TRAFFIC FINE	010-2220	64.15	0.00	64.15	64.15	0.00	2.57	61.58
JURY REIMBURSEMENT FEE	010-2231	8.00	8.00	0.00	8.00	0.00	0.80	7.20
INDIGENT DEFENSE FEES	010-2239	4.00	4.00	0.00	4.00	0.00	0.40	3.60
TRUANCY PREVENTION & DIVE	010-2245	4.00	4.00	0.00	4.00	0.00	0.40	3.60
LOCAL CC TRUANCY PREVENTI	010-2245	10.00	5.00	5.00	10.00	0.00	10.00	0.00
WARRANT	010-4104	100.00	100.00	0.00	100.00	0.00	100.00	0.00
LICENSE & WEIGHT FINE	010-4114	1004.00	1004.00	0.00	1004.00	0.00	502.00	502.00
STATE ARREST FEE	010-4114/010-2203	20.00	15.00	5.00	20.00	0.00	16.00	4.00
FINE	010-4214	790.00	634.00	156.00	790.00	0.00	790.00	0.00
LOCAL TRAFFIC FINE (EFF.	021/022/023/024-4127	3.85	0.00	3.85	3.85	0.00	3.85	0.00
LOCAL CC JURY FUND	057-4195	0.20	0.10	0.10	0.20	0.00	0.20	0.00
COURTHOUSE SECURITY	084-4119/133-4166	8.00	8.00	0.00	8.00	0.00	8.00	0.00
LOCAL CC COURTHOUSE SECUR	084-4119/133-4166	9.80	4.90	4.90	9.80	0.00	9.80	0.00
LOCAL CC TECH FUND	131-4192	8.00	4.00	4.00	8.00	0.00	8.00	0.00
TECH FUND	131-4193	8.00	8.00	0.00	8.00	0.00	8.00	0.00
COLLECTION FEE	HOLD	260.40	260.40	0.00	260.40*	0.00	260.40	0.00
		2518.40	2213.40	305.00	2518.40	0.00	1741.62	776.78
CIVIL DISTRIBUTIONS								
County Dispute Resolution	010-2232	15.00	15.00	0.00	15.00	0.00	15.00	0.00
Language Access Fund	010-2248	9.00	9.00	0.00	9.00	0.00	9.00	0.00
State Consolidated Civi	010-2250	63.00	63.00	0.00	63.00	0.00	63.00	0.00
Justice Court Supp	137-4115	75.00	75.00	0.00	75.00	0.00	75.00	0.00
		162.00	162.00	0.00	162.00	0.00	99.00	63.00

SUMMARY BREAKDOWN

CREDIT CARD	305.00
CHECK	2375.40
TOTAL MONETARY	2680.40
TOTAL NON-MONETARY	0.00
TOTAL AMOUNT	2680.40
RECEIPT NO.	20180941 TO 20180949

LESS CREDIT CARD 2375.40

2680.40
- 260.40

420.00*

MONTHLY DISTRIBUTION BY CATEGORY BY GL CODE (DETAIL REPORT)
BRAD BRIDGES, LAMB JP 2 - RAN ON 11/01/2024 AT 11:09am

ALL USERS

ALL CASE TYPES

10/01/2024 THRU 10/31/2024

SELECTED BY RECEIPT DATE

CRIMINAL DETAIL FOR CONSOLIDATED COURT COSTS 010-2213

RECEIPT #	RCPT DATE	FEE AMT	PAY TYPE	RCPT TOT	WHO PAID	CAUSE NO
20180946	10/15/2024	62.00	CK	1085.00	SALAS-REMIS, CARLOS IVAN	2024-0055

Fee Total 62.00

CRIMINAL DETAIL FOR CONSOLIDATED COURT COSTS 010-2213

RECEIPT #	RCPT DATE	FEE AMT	PAY TYPE	RCPT TOT	WHO PAID	CAUSE NO
20180945	10/09/2024	62.00	CC	220.00	GLOVER, SHANNA DEANNE	2024-0043

Fee Total 62.00

CRIMINAL DETAIL FOR CONSOLIDATED COURT COSTS 010-2213

RECEIPT #	RCPT DATE	FEE AMT	PAY TYPE	RCPT TOT	WHO PAID	CAUSE NO
20180947	10/16/2024	40.00	CCK	235.30	LERMA, ARNOLDO JAVIER	2019-0026
20180948	10/16/2024	40.00	CCK	893.10	LERMA, ARNOLDO JAVIER	2019-0025

Fee Total 80.00

CRIMINAL DETAIL FOR JUDICIAL SUPPORT FEE 010-2216

RECEIPT #	RCPT DATE	FEE AMT	PAY TYPE	RCPT TOT	WHO PAID	CAUSE NO
20180947	10/16/2024	6.00	CCK	235.30	LERMA, ARNOLDO JAVIER	2019-0026
20180948	10/16/2024	6.00	CCK	893.10	LERMA, ARNOLDO JAVIER	2019-0025

Fee Total 12.00

CRIMINAL DETAIL FOR STATE TRAFFIC FINE 010-2220

RECEIPT #	RCPT DATE	FEE AMT	PAY TYPE	RCPT TOT	WHO PAID	CAUSE NO
20180944	10/09/2024	14.15	CC	45.00	SIMS, STEVEN LESTER	2024-0032
20180945	10/09/2024	50.00	CC	220.00	GLOVER, SHANNA DEANNE	2024-0043

Fee Total 64.15

CRIMINAL DETAIL FOR JURY REIMBURSEMENT FEE 010-2231

RECEIPT #	RCPT DATE	FEE AMT	PAY TYPE	RCPT TOT	WHO PAID	CAUSE NO
20180947	10/16/2024	4.00	CCK	235.30	LERMA, ARNOLDO JAVIER	2019-0026
20180948	10/16/2024	4.00	CCK	893.10	LERMA, ARNOLDO JAVIER	2019-0025

Fee Total 8.00

CRIMINAL DETAIL FOR INDIGENT DEFENSE FEES 010-2239

RECEIPT #	RCPT DATE	FEE AMT	PAY TYPE	RCPT TOT	WHO PAID	CAUSE NO
-----------	-----------	---------	----------	----------	----------	----------

MONTHLY DISTRIBUTION BY CATEGORY BY GL CODE (DETAIL REPORT)
BRAD BRIDGES, LAMB JP 2 - RAN ON 11/01/2024 AT 11:09am

ALL USERS

ALL CASE TYPES

10/01/2024 THRU 10/31/2024

SELECTED BY RECEIPT DATE

20180947	10/16/2024	2.00	CCK	235.30	LERMA,ARNOLDO JAVIER	2019-0026
20180948	10/16/2024	2.00	CCK	893.10	LERMA,ARNOLDO JAVIER	2019-0025

Fee Total 4.00

CRIMINAL DETAIL FOR TRUANCY PREVENTION & DIVERSION FUND 010-2245

RECEIPT #	RCPT DATE	FEE AMT	PAY TYPE	RCPT TOT	WHO PAID	CAUSE NO.
20180947	10/16/2024	2.00	CCK	235.30	LERMA,ARNOLDO JAVIER	2019-0026
20180948	10/16/2024	2.00	CCK	893.10	LERMA,ARNOLDO JAVIER	2019-0025

Fee Total 4.00

CRIMINAL DETAIL FOR LOCAL CC TRUANCY PREVENTION 010-2245

RECEIPT #	RCPT DATE	FEE AMT	PAY TYPE	RCPT TOT	WHO PAID	CAUSE NO.
20180946	10/15/2024	5.00	CK	1085.00	SALAS-REMIS,CARLOS IVAN	2024-0055

Fee Total 5.00

CRIMINAL DETAIL FOR LOCAL CC TRUANCY PREVENTION 010-2245

RECEIPT #	RCPT DATE	FEE AMT	PAY TYPE	RCPT TOT	WHO PAID	CAUSE NO.
20180945	10/09/2024	5.00	CC	220.00	GLOVER,SHANNA DEANNE	2024-0043

Fee Total 5.00

CRIMINAL DETAIL FOR WARRANT 010-4104

RECEIPT #	RCPT DATE	FEE AMT	PAY TYPE	RCPT TOT	WHO PAID	CAUSE NO.
20180947	10/16/2024	50.00	CCK	235.30	LERMA,ARNOLDO JAVIER	2019-0026
20180948	10/16/2024	50.00	CCK	893.10	LERMA,ARNOLDO JAVIER	2019-0025

Fee Total 100.00

CRIMINAL DETAIL FOR LICENSE & WEIGHT FINE 010-4114

RECEIPT #	RCPT DATE	FEE AMT	PAY TYPE	RCPT TOT	WHO PAID	CAUSE NO.
20180946	10/15/2024	1004.00	CK	1085.00	SALAS-REMIS,CARLOS IVAN	2024-0055

Fee Total 1004.00

CRIMINAL DETAIL FOR STATE ARREST FEE 010-4114/010-2203

RECEIPT #	RCPT DATE	FEE AMT	PAY TYPE	RCPT TOT	WHO PAID	CAUSE NO.
20180946	10/15/2024	5.00	CK	1085.00	SALAS-REMIS,CARLOS IVAN	2024-0055

Fee Total 5.00

CRIMINAL DETAIL FOR STATE ARREST FEE 010-4114/010-2203

RECEIPT #	RCPT DATE	FEE AMT	PAY TYPE	RCPT TOT	WHO PAID	CAUSE NO.
-----------	-----------	---------	----------	----------	----------	-----------

MONTHLY DISTRIBUTION BY CATEGORY BY GL CODE (DETAIL REPORT)
BRAD BRIDGES, LAMB JP 2 - RAN ON 11/01/2024 AT 11:09am

ALL CASE TYPES

10/01/2024 THRU 10/31/2024
SELECTED BY RECEIPT DATE

20180945	10/09/2024	5.00	CC	220.00	GLOVER, SHANNA DEANNE	2024-0043
----------	------------	------	----	--------	-----------------------	-----------

Fee Total 5.00

CRIMINAL DETAIL FOR STATE ARREST FEE 010-4114/010-2203

RECEIPT #	RCPT DATE	FEE AMT	PAY TYPE	RCPT TOT	WHO PAID	CAUSE NO.
20180947	10/16/2024	5.00	CCK	235.30	LERMA, ARNOLDO JAVIER	2019-0026
20180948	10/16/2024	5.00	CCK	893.10	LERMA, ARNOLDO JAVIER	2019-0025

Fee Total 10.00

CRIMINAL DETAIL FOR FINE 010-4214

RECEIPT #	RCPT DATE	FEE AMT	PAY TYPE	RCPT TOT	WHO PAID	CAUSE NO.
20180943	10/09/2024	40.00	CC	40.00	GARCIA, JASMINE TOVAR	2021-0090
20180944	10/09/2024	30.00	CC	45.00	SIMS, STEVEN LESTER	2024-0032
20180945	10/09/2024	86.00	CC	220.00	GLOVER, SHANNA DEANNE	2024-0043

Fee Total 156.00

CRIMINAL DETAIL FOR FINE 010-4214

RECEIPT #	RCPT DATE	FEE AMT	PAY TYPE	RCPT TOT	WHO PAID	CAUSE NO.
20180947	10/16/2024	64.00	CCK	235.30	LERMA, ARNOLDO JAVIER	2019-0026
20180948	10/16/2024	570.00	CCK	893.10	LERMA, ARNOLDO JAVIER	2019-0025

Fee Total 634.00

CRIMINAL DETAIL FOR LOCAL TRAFFIC FINE (EFF. 9.1.19) 021/022/023/024-4127

RECEIPT #	RCPT DATE	FEE AMT	PAY TYPE	RCPT TOT	WHO PAID	CAUSE NO.
20180944	10/09/2024	0.85	CC	45.00	SIMS, STEVEN LESTER	2024-0032
20180945	10/09/2024	3.00	CC	220.00	GLOVER, SHANNA DEANNE	2024-0043

Fee Total 3.85

CRIMINAL DETAIL FOR LOCAL CC JURY FUND 057-4195

RECEIPT #	RCPT DATE	FEE AMT	PAY TYPE	RCPT TOT	WHO PAID	CAUSE NO.
20180946	10/15/2024	0.10	CC	1085.00	SALAS-REMIS, CARLOS IVAN	2024-0055

Fee Total 0.10

CRIMINAL DETAIL FOR LOCAL CC JURY FUND 057-4195

RECEIPT #	RCPT DATE	FEE AMT	PAY TYPE	RCPT TOT	WHO PAID	CAUSE NO.
20180945	10/09/2024	0.10	CC	220.00	GLOVER, SHANNA DEANNE	2024-0043

Fee Total 0.10

MONTHLY DISTRIBUTION BY CATEGORY BY GL CODE (DETAIL REPORT)
BRAD BRIDGES, LAMB JP 2 - RAN ON 11/01/2024 AT 11:09am

ALL USERS
ALL CASE TYPES
10/01/2024 THRU 10/31/2024
SELECTED BY RECEIPT DATE

CRIMINAL DETAIL FOR COURTHOUSE SECURITY 084-4119/133-4166

RECEIPT #	RCPT DATE	FEE AMT	PAY TYPE	RCPT TOT	WHO PAID	CAUSE NO.
20180947	10/16/2024	4.00	CCK	235.30	LERMA, ARNOLDO JAVIER	2019-0026
20180948	10/16/2024	4.00	CCK	893.10	LERMA, ARNOLDO JAVIER	2019-0025

Fee Total 8.00

CRIMINAL DETAIL FOR LOCAL CC COURTHOUSE SECURITY 084-4119/133-4166

RECEIPT #	RCPT DATE	FEE AMT	PAY TYPE	RCPT TOT	WHO PAID	CAUSE NO.
20180946	10/15/2024	4.90	CK	1085.00	SALAS-REMIS, CARLOS IVAN	2024-0055

Fee Total 4.90

CRIMINAL DETAIL FOR LOCAL CC COURTHOUSE SECURITY 084-4119/133-4166

RECEIPT #	RCPT DATE	FEE AMT	PAY TYPE	RCPT TOT	WHO PAID	CAUSE NO.
20180945	10/09/2024	4.90	CC	220.00	GLOVER, SHANNA DEANNE	2024-0043

Fee Total 4.90

CRIMINAL DETAIL FOR LOCAL CC TECH FUND 131-4192

RECEIPT #	RCPT DATE	FEE AMT	PAY TYPE	RCPT TOT	WHO PAID	CAUSE NO.
20180946	10/15/2024	4.00	CK	1085.00	SALAS-REMIS, CARLOS IVAN	2024-0055

Fee Total 4.00

CRIMINAL DETAIL FOR LOCAL CC TECH FUND 131-4192

RECEIPT #	RCPT DATE	FEE AMT	PAY TYPE	RCPT TOT	WHO PAID	CAUSE NO.
20180945	10/09/2024	4.00	CC	220.00	GLOVER, SHANNA DEANNE	2024-0043

Fee Total 4.00

CRIMINAL DETAIL FOR TECH FUND 131-4193

RECEIPT #	RCPT DATE	FEE AMT	PAY TYPE	RCPT TOT	WHO PAID	CAUSE NO.
20180947	10/16/2024	4.00	CCK	235.30	LERMA, ARNOLDO JAVIER	2019-0026
20180948	10/16/2024	4.00	CCK	893.10	LERMA, ARNOLDO JAVIER	2019-0025

Fee Total 8.00

CRIMINAL DETAIL FOR COLLECTION FEE HOLD

RECEIPT #	RCPT DATE	FEE AMT	PAY TYPE	RCPT TOT	WHO PAID	CAUSE NO.
20180947	10/16/2024	54.30	CCK	235.30	LERMA, ARNOLDO JAVIER	2019-0026
20180948	10/16/2024	206.10	CCK	893.10	LERMA, ARNOLDO JAVIER	2019-0025

Fee Total 260.40

MONTHLY DISTRIBUTION BY CATEGORY BY GL CODE (DETAIL REPORT)
BRAD BRIDGES, LAMB JP 2 - RAN ON 11/01/2024 AT 11:09am

ALL CASE TYPES
10/01/2024 THRU 10/31/2024
SELECTED BY RECEIPT DATE

CIVIL DETAIL FOR County Dispute Resolution Fund 010-2232

RECEIPT #	RCPT DATE	FEE AMT	PAY TYPE	RCPT TOT	WHO PAID	CAUSE NO
20180941	10/09/2024	5.00	CK	54.00		2024-016CV
20180942	10/09/2024	5.00	CK	54.00		2024-017CV
20180949	10/21/2024	5.00	CK	54.00		2024-018CV

Fee Total 15.00

CIVIL DETAIL FOR Language Access Fund 010-2249

RECEIPT #	RCPT DATE	FEE AMT	PAY TYPE	RCPT TOT	WHO PAID	CAUSE NO
20180941	10/09/2024	3.00	CK	54.00		2024-016CV
20180942	10/09/2024	3.00	CK	54.00		2024-017CV
20180949	10/21/2024	3.00	CK	54.00		2024-018CV

Fee Total 9.00

CIVIL DETAIL FOR State Consolidated Civil Fee 010-2250

RECEIPT #	RCPT DATE	FEE AMT	PAY TYPE	RCPT TOT	WHO PAID	CAUSE NO
20180941	10/09/2024	21.00	CK	54.00		2024-016CV
20180942	10/09/2024	21.00	CK	54.00		2024-017CV
20180949	10/21/2024	21.00	CK	54.00		2024-018CV

Fee Total 63.00

CIVIL DETAIL FOR Justice Court Support Fund 137-4115

RECEIPT #	RCPT DATE	FEE AMT	PAY TYPE	RCPT TOT	WHO PAID	CAUSE NO
20180941	10/09/2024	25.00	CK	54.00		2024-016CV
20180942	10/09/2024	25.00	CK	54.00		2024-017CV
20180949	10/21/2024	25.00	CK	54.00		2024-018CV

Fee Total 75.00

RCPT# 20180948	10/16/2024	09:39am	\$893.10	JPZ	NAME: LERMA,ARNOLDO JAVIER	TICKET # TX5FBE0V1V9N	BALANCE: 0.00
Cashier's Check	-		\$893.10		MONETARY		
COLLECTION FEE			206.10				
CASE # 2019-0025							

RCPT# 20180947	10/16/2024	09:36am	\$235.30	JPZ	NAME: LERMA,ARNOLDO JAVIER	TICKET # TX5FBE0V1V9N	BALANCE: 0.00
Cashier's Check	-		\$235.30		MONETARY		
COLLECTION FEE			54.30				
CASE # 2019-0026							